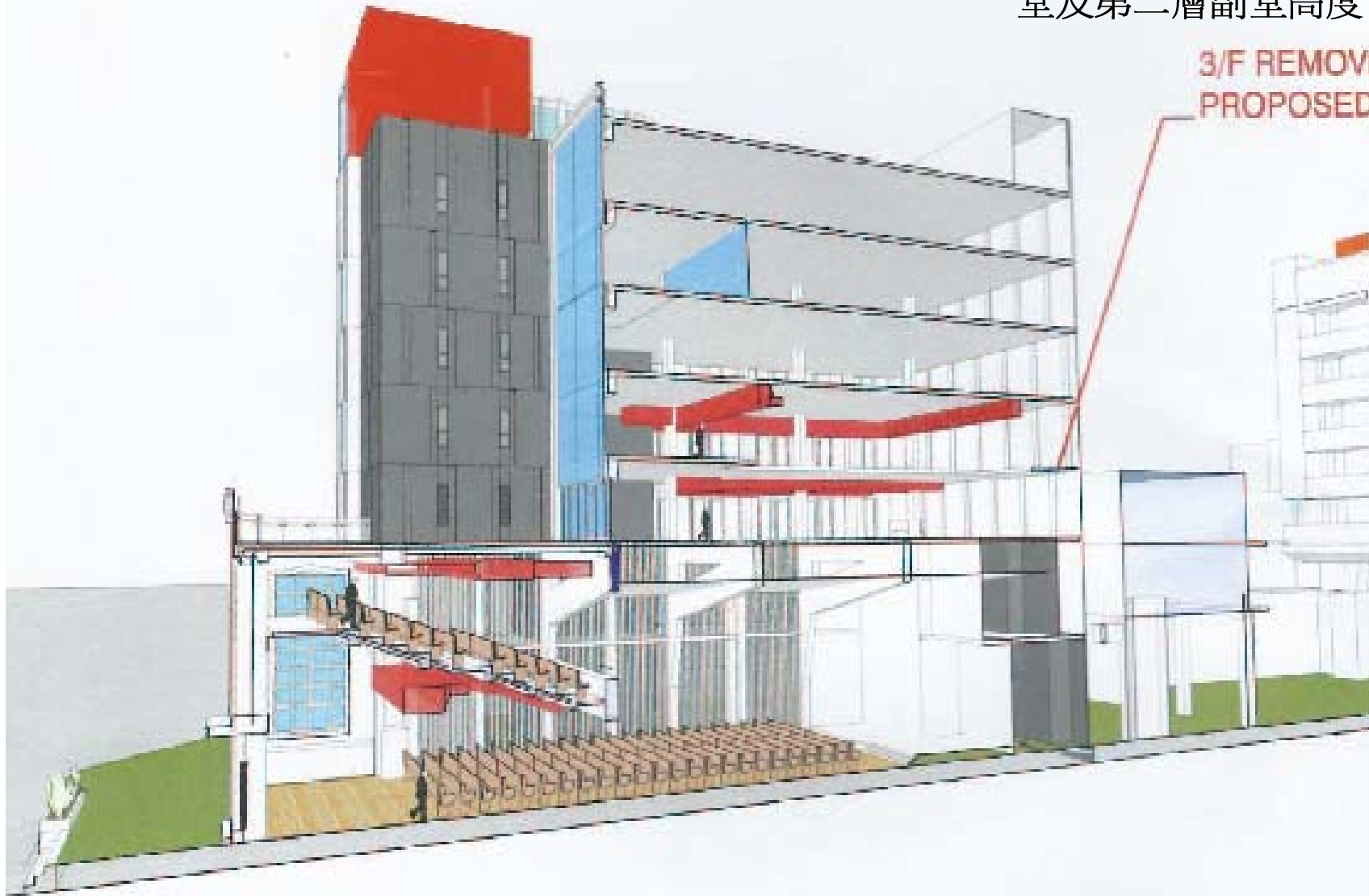


Scale 1:100  
SK01003

將第三層挪走，增加首層大堂及第二層副堂高度

3/F REMOVED IN  
PROPOSED SCHEME



ADDITIONAL AREA

最高三層向達之路方向  
移前約三米以增加樓面  
面積



INCREASE OF  
HEADROOM

增加首層大堂及  
第二層副堂高度



CURRENT SCHEME

ADDITIONAL AREA

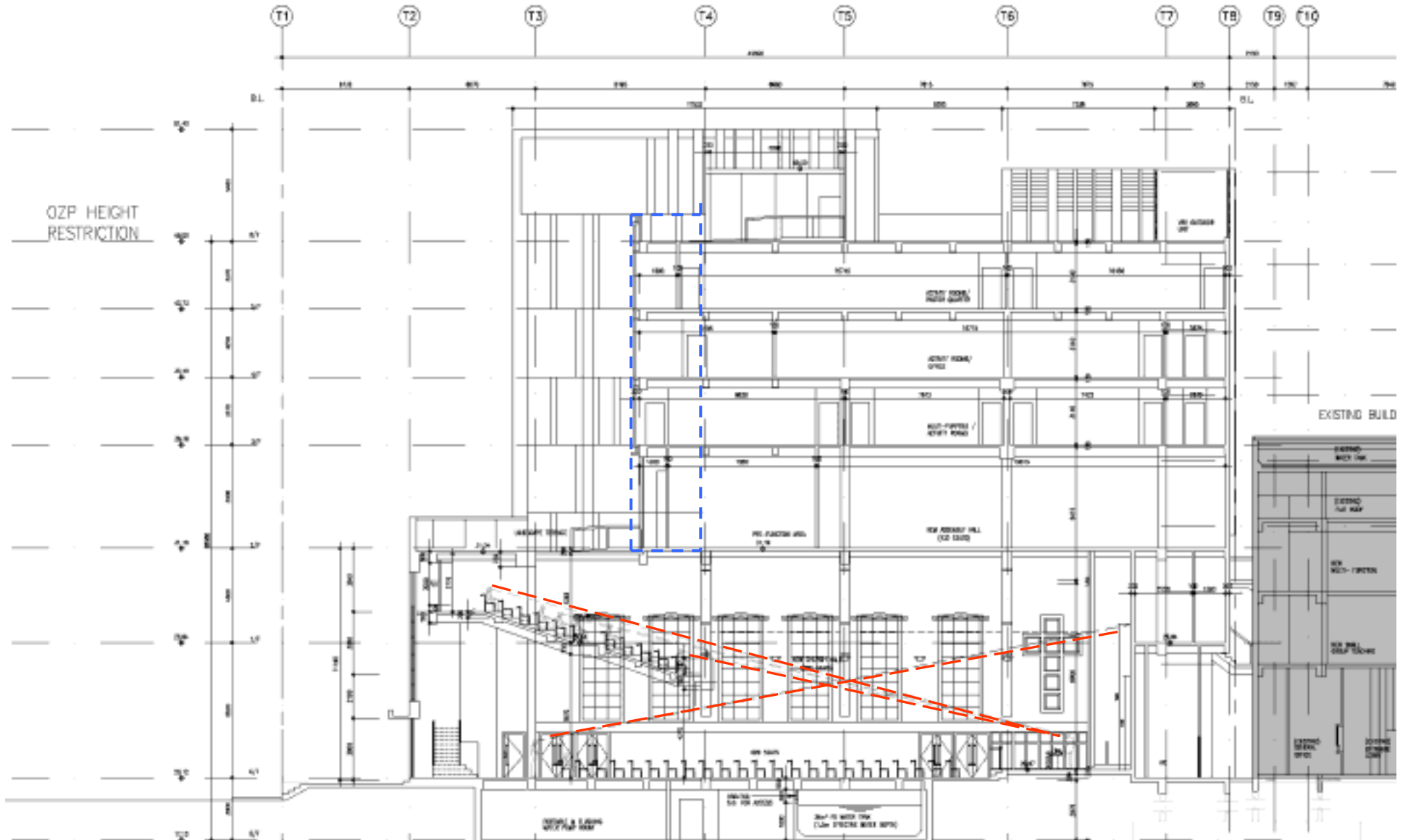
最高三層向達之路方向移前  
約三米以增加樓面面積



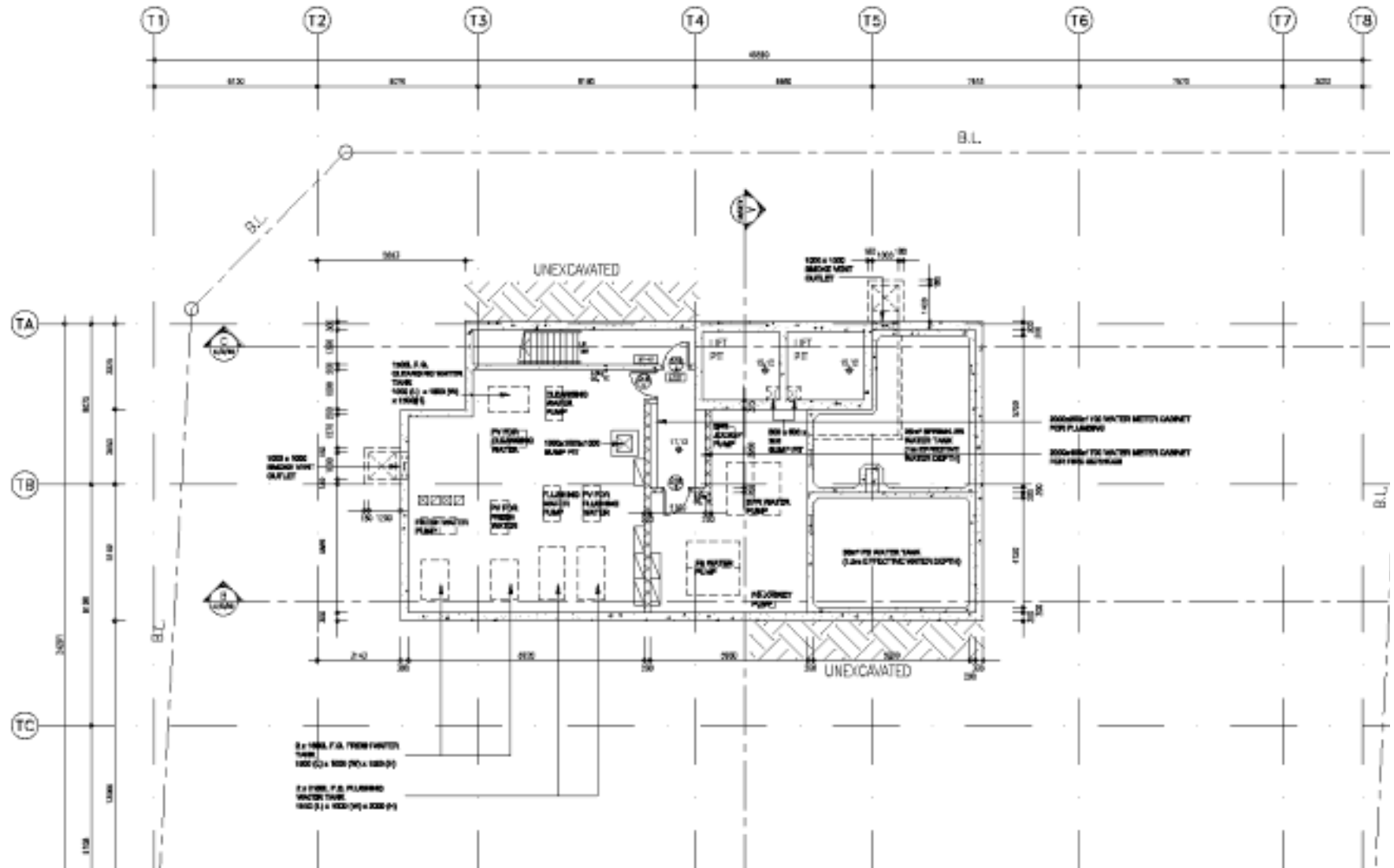
增加首層大堂及第  
二層副堂高度

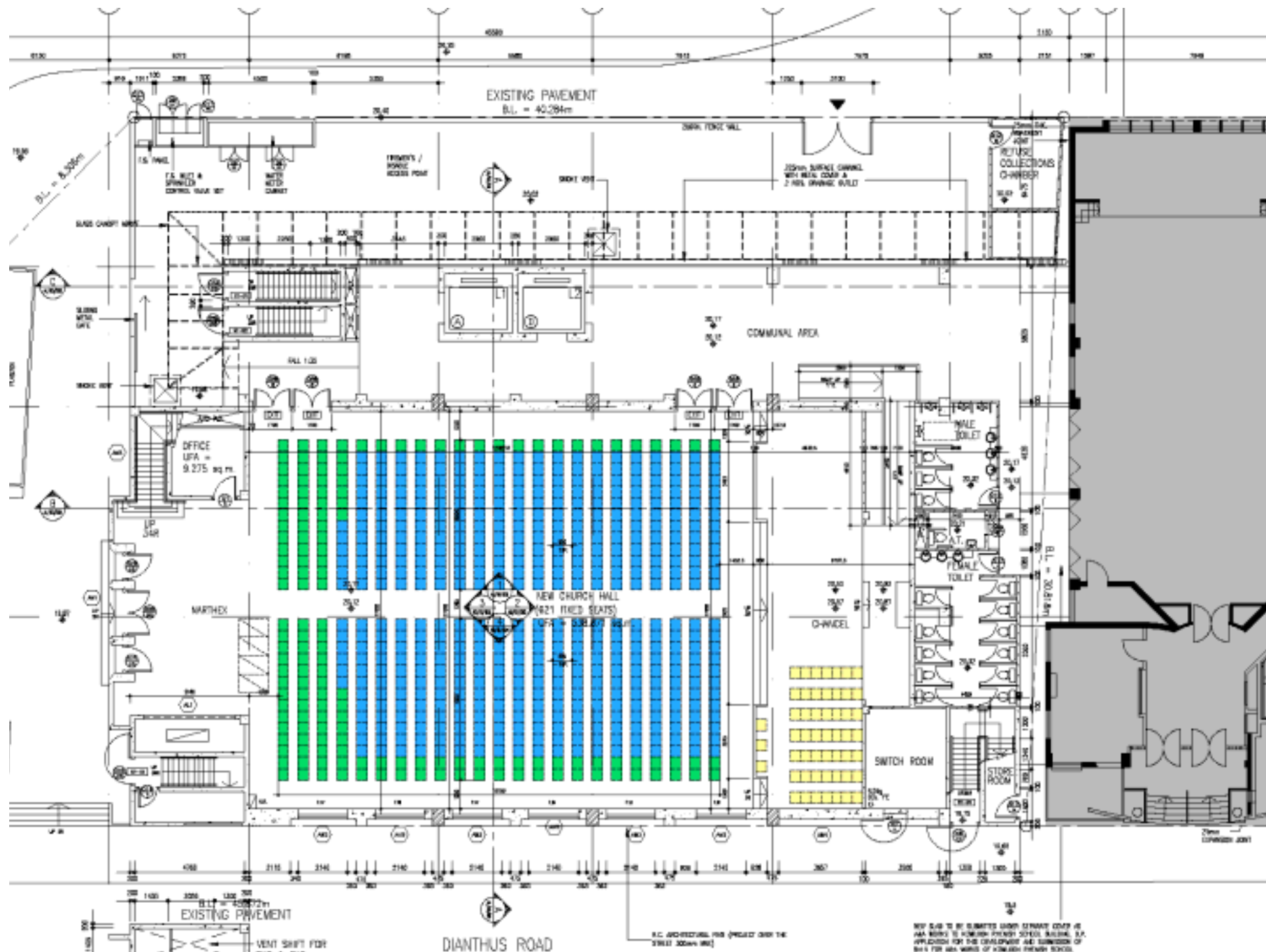
HEIGHT CHANGE  
OF FACADE DUE  
TO ADDITIONAL  
HEADROOM

PROPOSED DESIGN REVISION



# 地庫機電層





NOT SCALE TO BE SUBMITTED UNDER CONTRACT AS IT IS A WORKING DRAWING. ANY CHANGES TO BE APPROVED BY THE CONTRACTOR AND SUBMITTED TO THE ARCHITECT FOR APPROVAL.

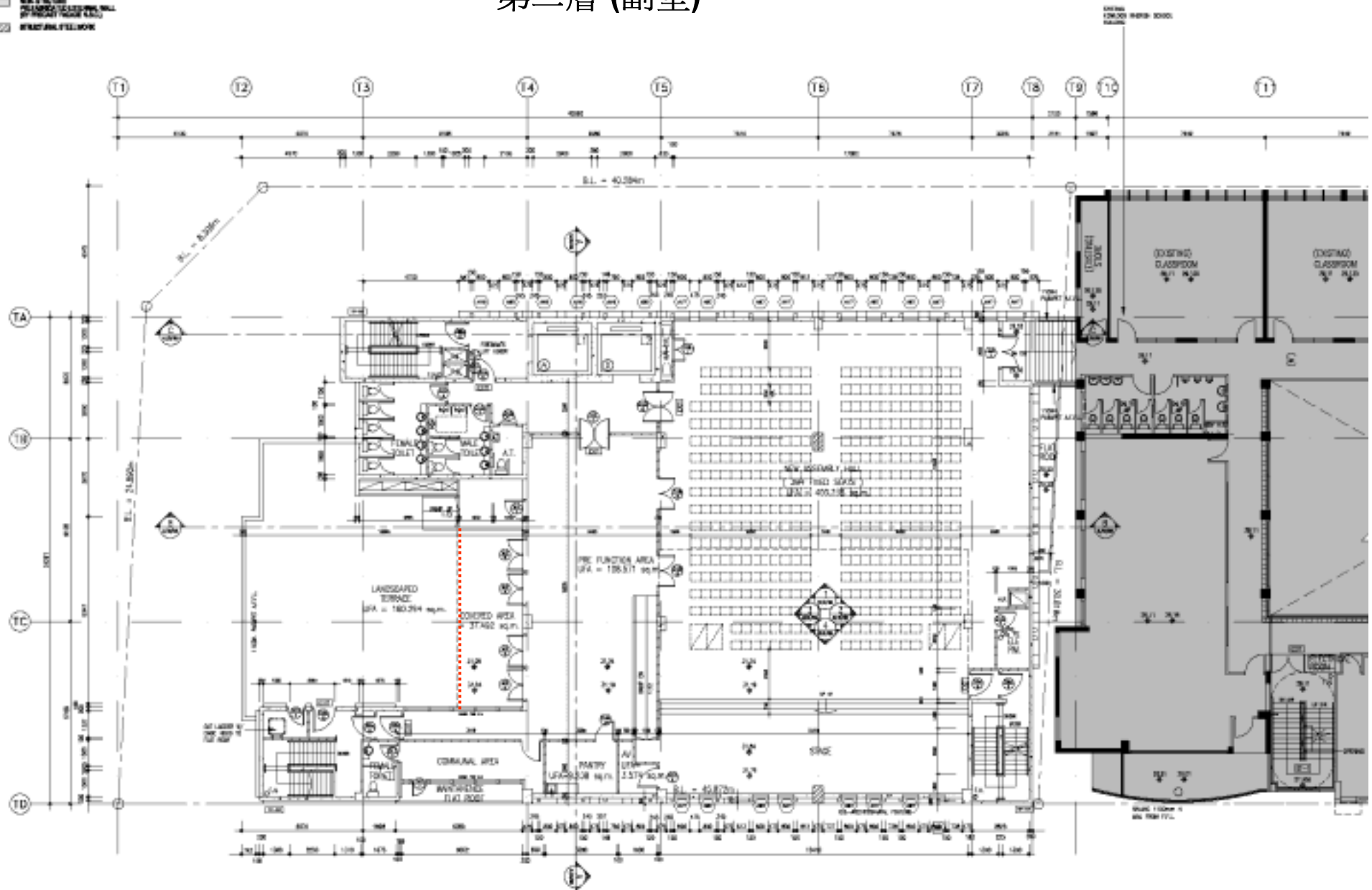




END

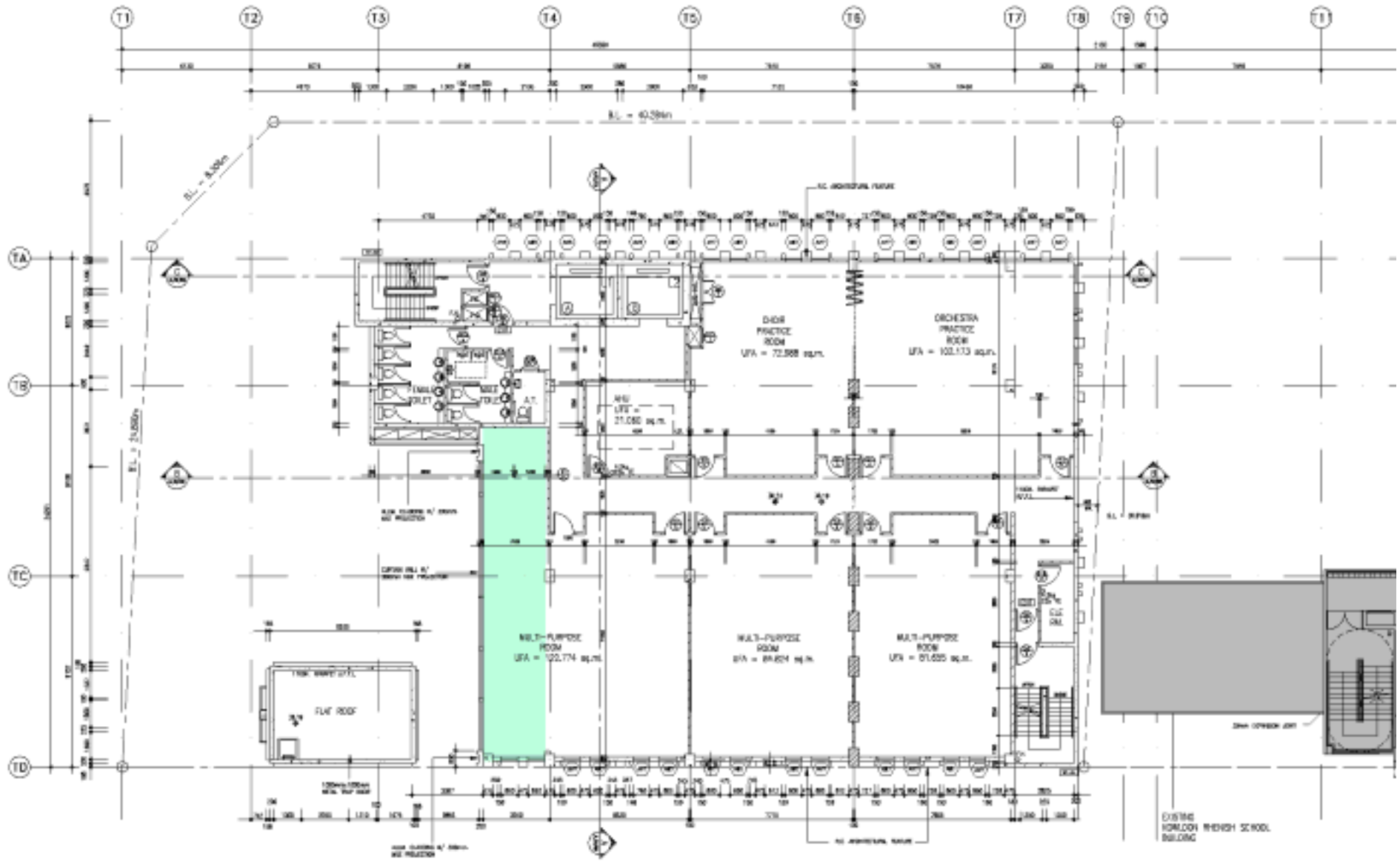
-  REINFORCED CONCRETE
-  EXISTING REINFORCED CONCRETE SLAB
-  EXISTING REINFORCED CONCRETE SLAB
-  EXISTING REINFORCED CONCRETE SLAB
-  EXISTING REINFORCED CONCRETE SLAB
-  EXISTING REINFORCED CONCRETE SLAB
-  EXISTING REINFORCED CONCRETE SLAB

## 第二層 (副堂)



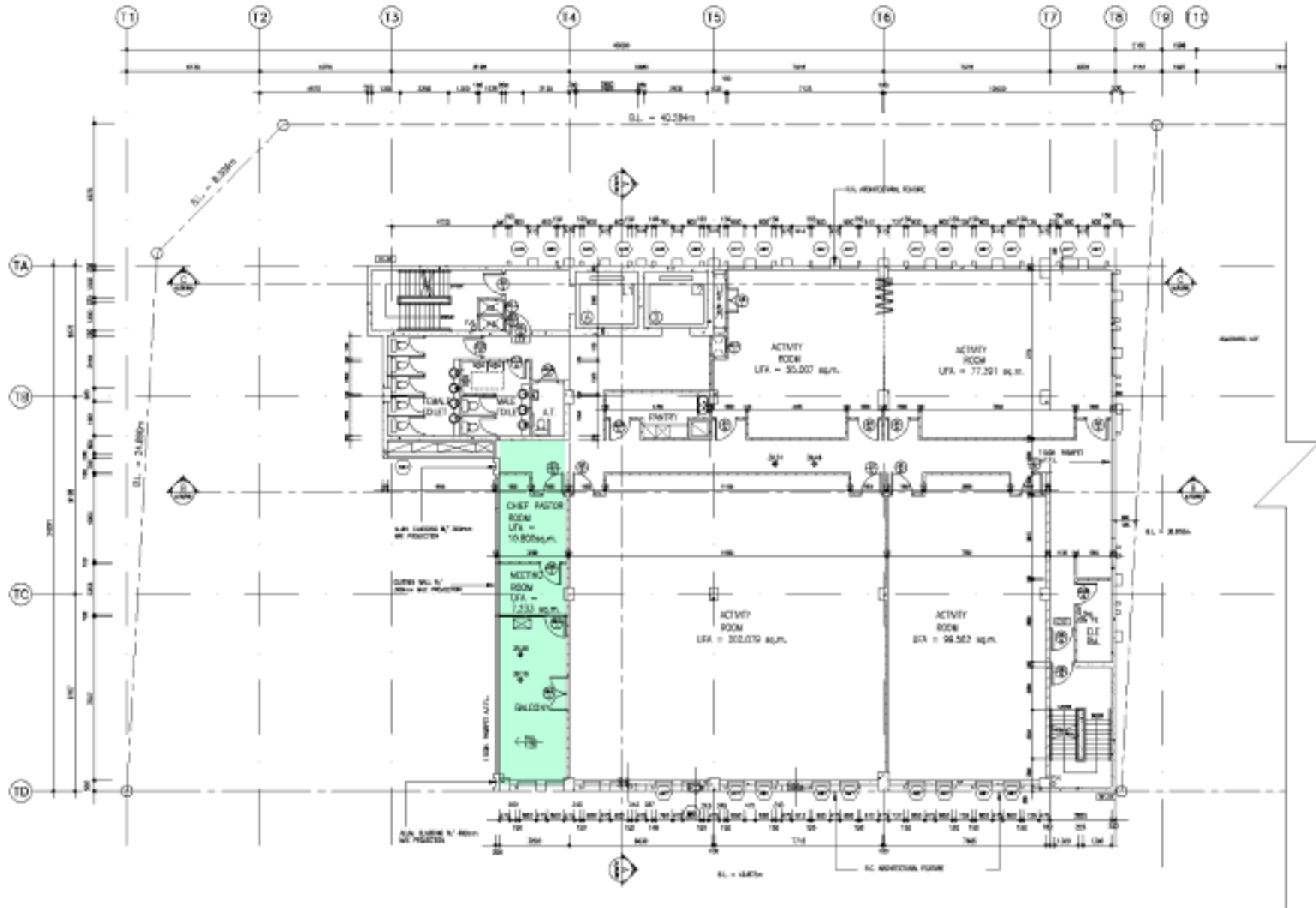
-  NEW TO EXISTING CONCRETE STRUCTURE
-  NEW TO EXISTING CONCRETE STRUCTURE
-  NEW STRUCTURE
-  STRUCTURAL STEELWORK

# 第三層



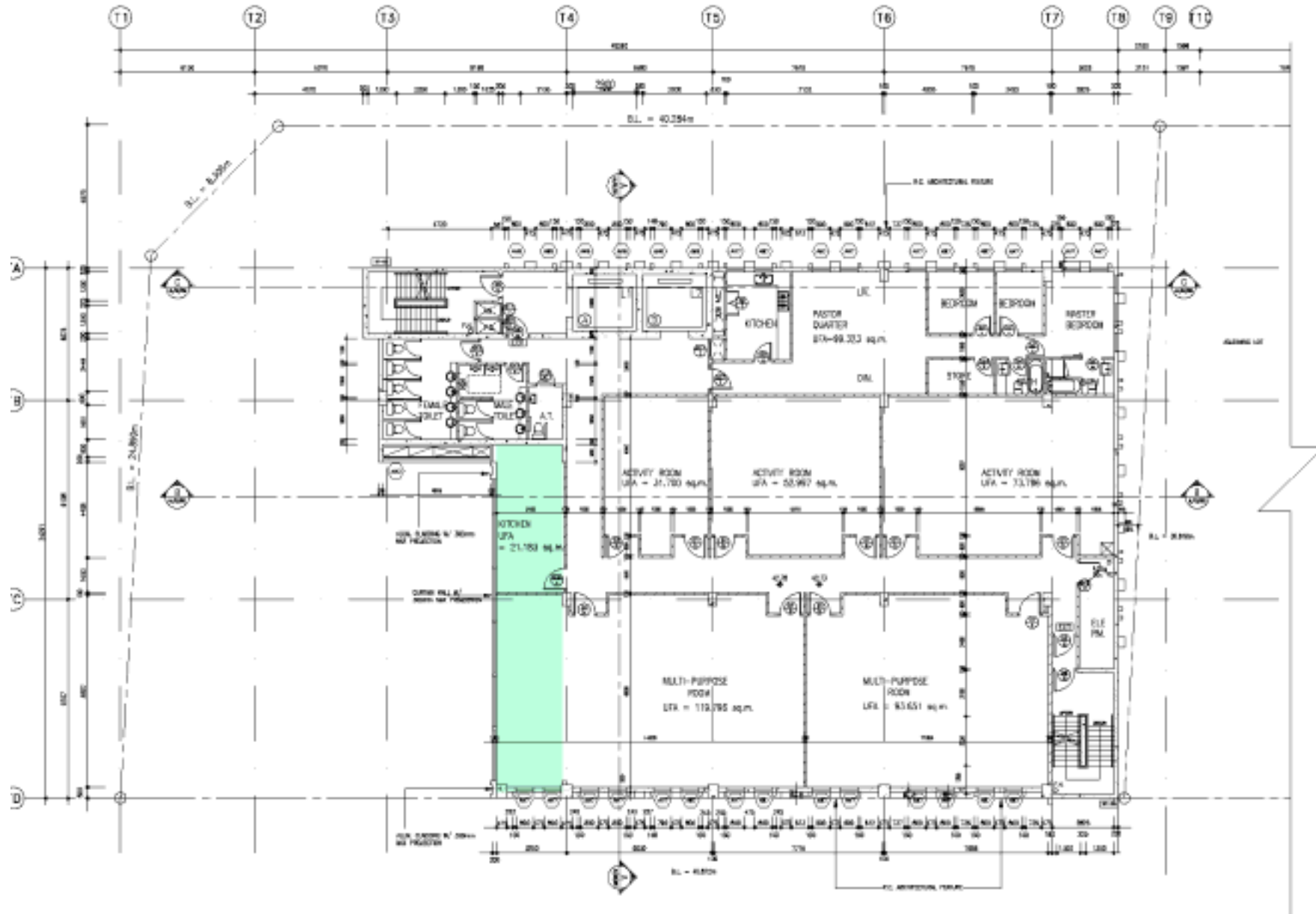
- Thin Tile Ceiling Composite Structure  
Reinforced Concrete Slab
- Thin Tile Ceiling Composite Structure  
Reinforced Concrete Slab
- Non-Structure  
Dry Ceiling / Suspended Wall  
Dry Partition Wall

# 第四層



THESE LIMITS (DIMENSIONS SHOWN)  
DO NOT CONSTITUTE A WARRANTY  
OR LIABILITY ON THE PART OF  
THE ARCHITECT.  
THESE LIMITS (DIMENSIONS SHOWN)  
DO NOT CONSTITUTE A WARRANTY  
OR LIABILITY ON THE PART OF  
THE ARCHITECT.  
THESE LIMITS (DIMENSIONS SHOWN)  
DO NOT CONSTITUTE A WARRANTY  
OR LIABILITY ON THE PART OF  
THE ARCHITECT.

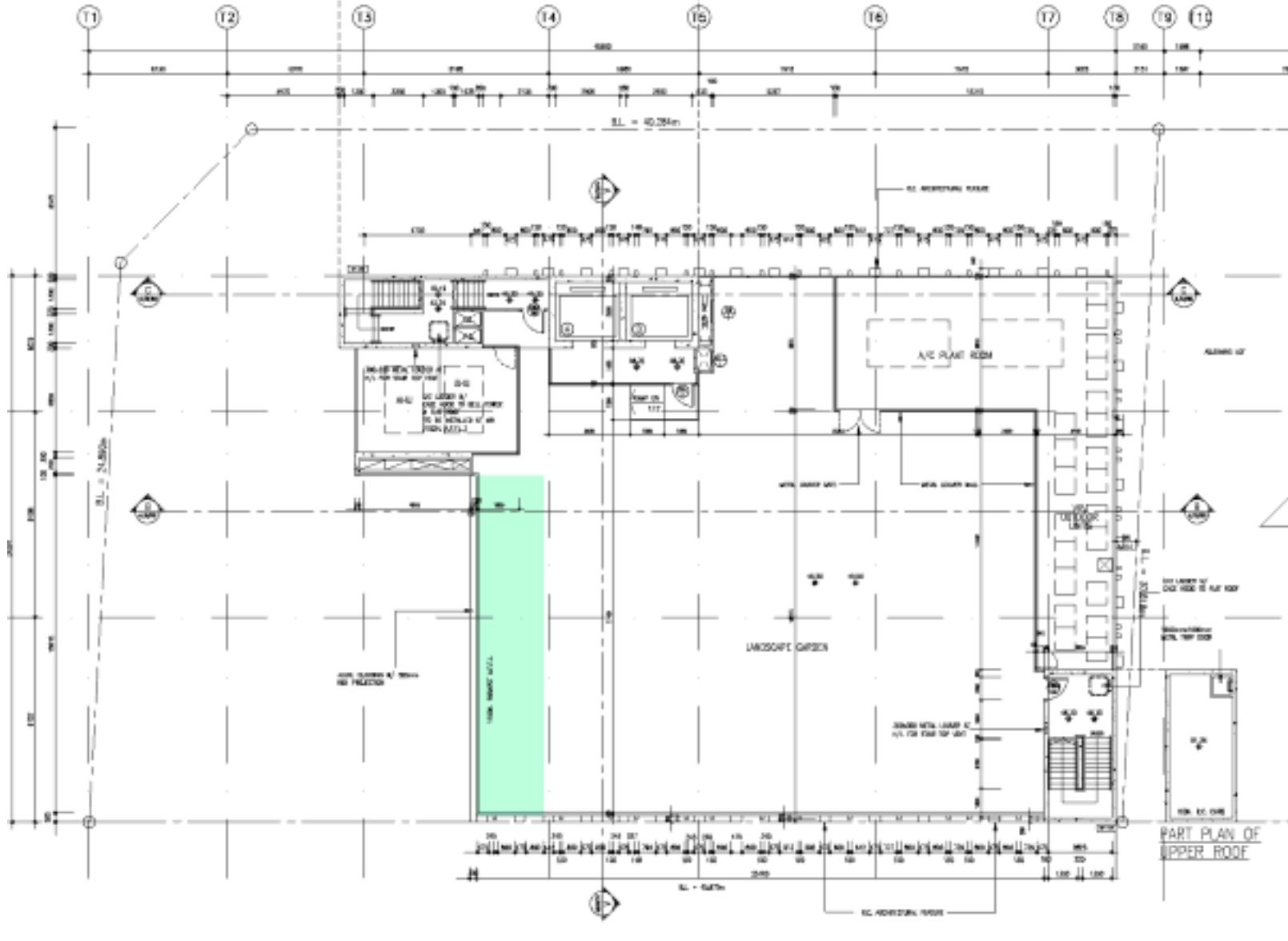
# 第五層



1. LANDSCAPE GARDEN (SEE PLAN)  
2. LANDSCAPE GARDEN (SEE PLAN)  
3. LANDSCAPE GARDEN (SEE PLAN)  
4. LANDSCAPE GARDEN (SEE PLAN)  
5. LANDSCAPE GARDEN (SEE PLAN)  
6. LANDSCAPE GARDEN (SEE PLAN)  
7. LANDSCAPE GARDEN (SEE PLAN)  
8. LANDSCAPE GARDEN (SEE PLAN)  
9. LANDSCAPE GARDEN (SEE PLAN)  
10. LANDSCAPE GARDEN (SEE PLAN)



天台



項目	預算費用 (以港幣百萬元為單位)		
	每年上漲幅度		
	8%	10%	15%
建築成本	188.06	190.73	200.08
顧問費用	8.52	8.52	8.52
活動傢俱、設備及添置	3.00	3.00	3.00
小計 (總建築預算)	199.58	202.25	211.60
約數為	<b>200.00</b>	<b>203.00</b>	<b>212.00</b>
過渡期安排	11.60	11.60	11.60
<b>總計</b>	<b>211.60</b>	<b>214.60</b>	<b>223.60</b>

# 總建築費用增加

建築費用增加	HK\$'M
2011年底至2013年3月漲幅	15.0
2013年3月至預算開工日漲幅 (每年 8%)	15.0
因地質差引致地基費用增加	13.0
備用金額	12.0
其他(對比2011年的最新設計變動)	5.0
<b>總建築費用增加</b>	<b>60.0</b>



# 總建造費用累積支出圖表

(不含過渡費用支出)

